

1

2

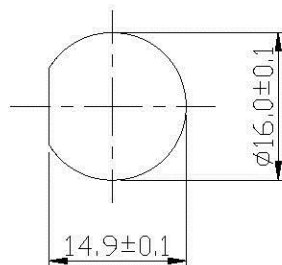
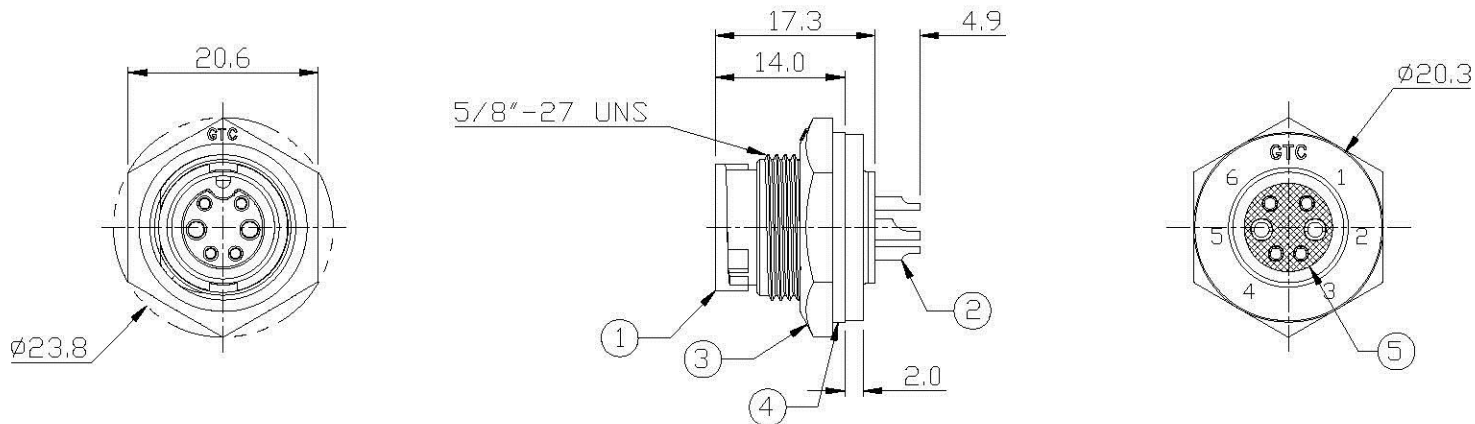
3

4

Notes: (Unless Otherwise Specified)

1. Waterproof Rate : IP67.
2. Recommend Panel Thickness : 0.8 to 4.0 mm.
3. Recommend Torque: 6~7 Kgf-cm.
4. Mating Cap P/N :GT1C5221X2.
5. RoHS Compliant.

REV	ECN#	DESCRIPTION OF REVISION	DRAW BY DATE	CHECK BY DATE	APPROVE BY DATE
02		Redraw	Joyce 03/20/12	Lucas 03/20/12	Ray 03/20/12



Recommend
Panel Cut-Out

5	Glue	Epoxy Color: Black	
4	Gasket	Silicone Color: Black	1
3	Hex Nut	Thermoplastic Color: Black	1
2	Contacts	Copper Alloy Finish: Au Plated	6
1	Housing	Thermoplastic Color: Black	1
Item	Part Name	Material / Finish	Qty



TITLE	DRAWING NUMBER	REV.
C2 5A+10A 6P Panel Female Solder Lock	GT152200-06060	02

Allconnectors

www.allconnectors.de info@allconnectors.de
Tel.: 0049 711 7005503 Fax: 0049 711 7005504
70734 Filderstadt - Germany kettenstr. 25

THE INFORMATION CONTAINED HEREIN IS THE PROPRIETARY PROPERTY OF GT Contact Co., LTD. THE POSSESSOR AGREES TO THE FOLLOWING:
(1) TO MAINTAIN THIS DOCUMENT IN CONFIDENCE
(2) NOT TO REPRODUCE OR COPY IT
(3) NOT TO REVEAL OR PUBLISH IT IN WHOLE OR PART
(4) ALL RIGHTS RESERVED

THIRD ANGLE PROJECTION	SIZE	SCALE	DRAW / DATE	CHECK / DATE	APPROVE / DATE	TOLERANCES	UNIT	SHEET
	B	1:1	Joyce 03/20/12	Lucas 03/20/12	Ray 03/20/12	X.X ± 0.5 X.XX ± 0.2	mm	1/1

1

2

3

4